

# PRINCE RUPERT COMMUNITY LEAGUE

## WHAT WE HEARD REPORT

Park Site Concept Development  
2019.04.30

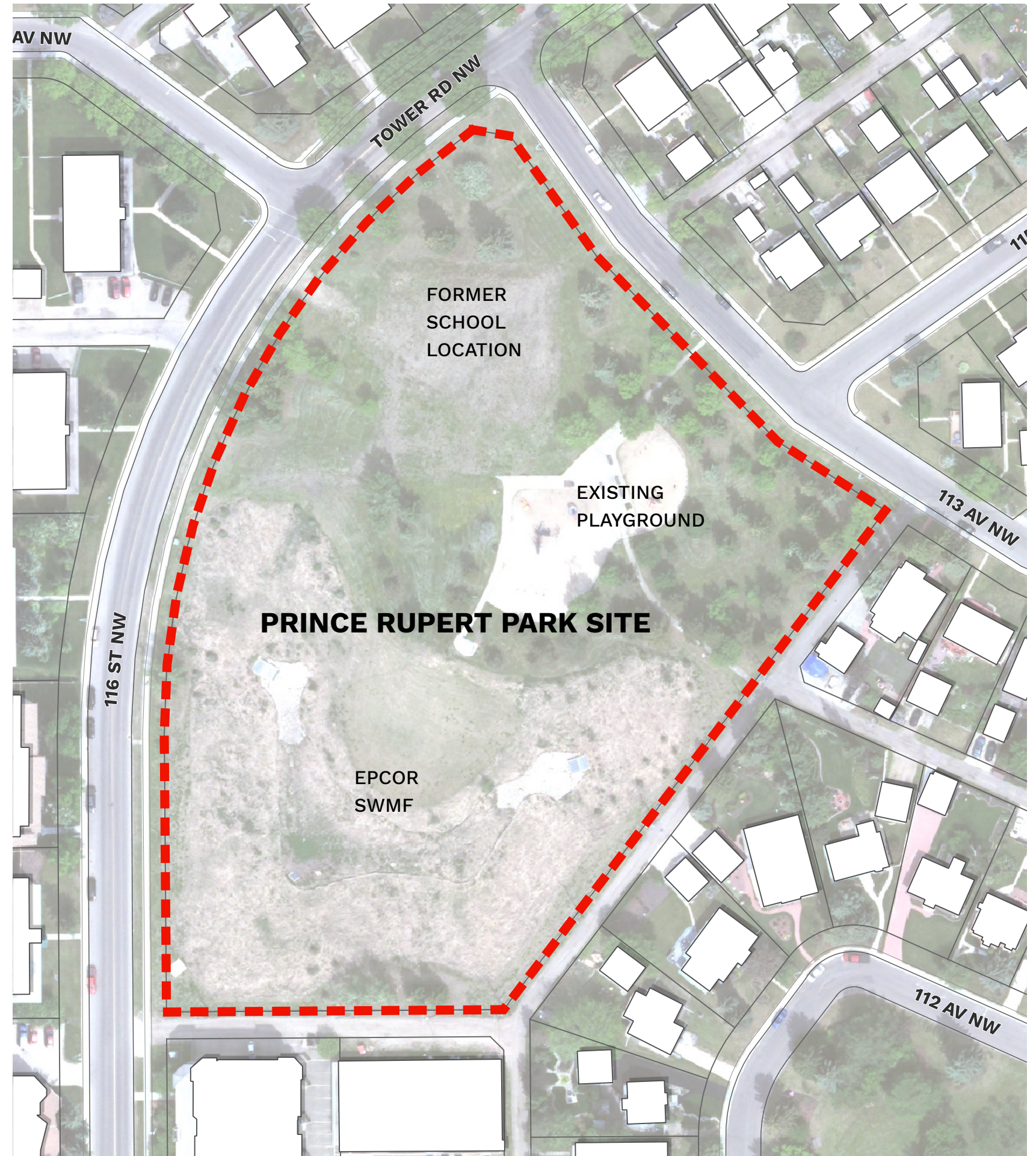




## Project Overview

The Prince Rupert Community League is currently in the process of developing integrated park concepts for the Prince Rupert Community Park site located generally at 116 Street and 113 Avenue in Edmonton, Alberta. On the northwestern portion of the site of a former school existed which has since been demolished. On the southern part of the site a dry pond (SWMF) was developed as a flood prevention measure in 2015. The SWMF land is owned by the City, but is under EPCOR's jurisdiction from an operations and maintenance perspective.

The Prince Rupert Community League (PRCL) is currently in discussions and negotiations with the City to define a lease area, which the PRCL will then use to direct future development of initiatives across portions of the park site. As part of this process, The PRCL retained EDA Planning + Urban Design to develop park site plans to guide future development of the park site, and to build momentum behind its initiatives to be prioritized and implemented over time as funding sources become available.





# Previous Engagement Work

Prior to hiring EDA Planning + Design, the PRCL had previously undertaken some independent survey work with the community to gauge issues and desires for improvements of the Prince Rupert Park site.

EDA was hired in 2018, and In December of that year the PRCL and EDA hosted a Community Visioning Workshop. At that event the community was represented by a small working committee less than 10 people in size. During the workshop, the project team reviewed park inventory and analysis material, and prioritized a number of initiatives and desires for the park as previously heard from the community. The team worked with maps and markers to generate a plan highlighting issues and opportunities for a park site design. Following this, EDA took feedback received at the workshop, and used it in the development of two concept options for the park space.





# March 2019 Community Wide Public Engagement

EDA developed two concept level options based initiatives discussed and prioritized previously by the community. In March of 2019 the PRCL and EDA undertook a community wide public engagement to receive feedback on the overall direction and preference for either of the concepts.

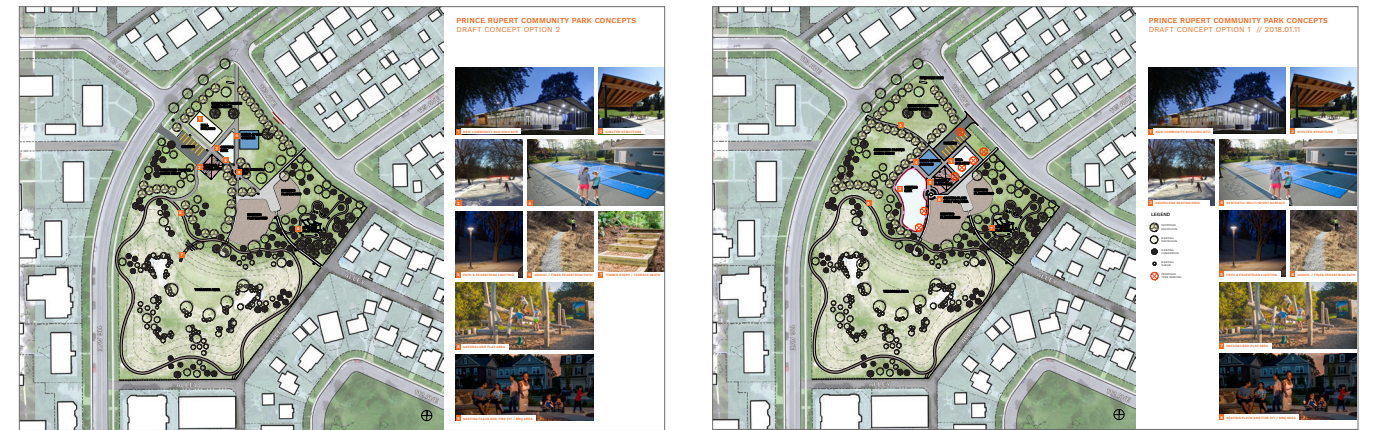
The community public engagement included an open house event hosted at the Queen Mary Park Community League on March 10th. The event was advertised both through a neighbourhood-wide mailout directed to all residences, and also promoted through online means using the PRCL website and its social media accounts, including Facebook and Twitter. Final attendance numbers at the physical open house on March 10th were approximately 30 people.

Concurrently, an online survey hosted through surveymonkey.com was open between the dates of 6 March and 22 March. The digital concepts were displayed with the online survey and respondents were asked a series of questions to gauge their support. The intention of the survey was to highlight neighbourhood satisfaction with the concept directions generally, and to gauge a preference for one concept over the other specifically. Open-ended questions were asked in conjunction with multiple choice questions in the survey to allow for potential suggestions and recommendations not yet considered.

## Event Feedback:

Feedback received at the event in the form of conversation, post-it notes, and drawings and notes on maps and figures included observations and recommendations such as:

- there are lots of cars parked on 113a Avenue
- I rarely see kids skating, and there is a bigger skating rink on school park
- combine the building and shelter instead of separating these initiatives
- support for proposed walking trails
- child safety - would like to see site fenced
- younger families are moving into the neighbourhood
- what would the multi court look like? what sports?
- evergreen trees provide opportunity for homeless
- playground not well used since school closed
- more and better lighting is needed
- it will be nice to see the park completed
- trees - line of sight with trees could be a concern. keep open - able to monitor better
- I would like to see a gym on the park site
- I would support a community garden on the park site
- I want the park site to feel more like a jungle with places to hide in the trees
- Better sightlines as trees provide a place for transients to hide and sleep
- I want to play on the natural playground
- I would like to be able to BBQ and picnic with family and community
- I want the park space to be inclusive
- I want natural habitat for wildlife to be enhanced





# March Survey

## Demographics

### Survey Questions

- Do you have youth (under the age of 18) in your household?
- Do you have seniors (65+) living in your household? Please enter no if you indicated you are a senior on question 1
- Do you rent your residence or own it?
- Do you live in a house or an apartment/condo?
- How long have you been living in the community?

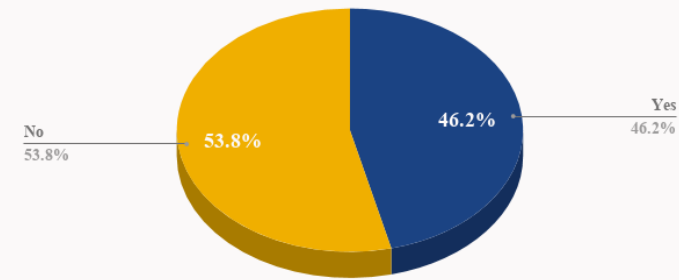
## Design Concepts

### Survey Questions

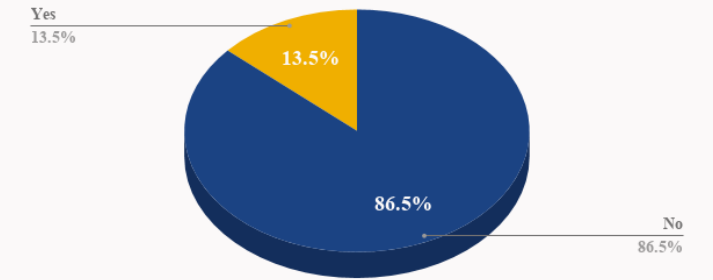
- What is your first reaction to the plans? Did you like them?
- Which of the two plans do you prefer?
- What do you like as laid out in the concept plans?
- What don't you like as laid out in the concept plans?
- Assuming the plan was built, do you see yourself using the space?
- How often do you see you or members of your household using the site?
- Are there any barriers or things that might prevent you or your household from using the site? What changes would make you and members of your household more likely to make use of the site as it exists today? Please rate how important the following are to you.
- Improved Lighting and Safety
- Improved Accessibility and Paths
- Enhanced Trees and Plants
- Enhanced Benches and Seating
- Improved Opportunities for Recreation (new playground, athletic pad, etc.)
- Other (please specify)
- Which activities do you and your household hope to participate in at the re-developed site? How important are they to you?
- Tobogganing
- Skating
- Hockey
- BBQing and Picnicking
- Climbing
- Gardening
- Playing sports (basketball, football, etc)
- Playing (on a new playground or in general)
- Working out (running, walking, weight training)
- Organized Community Activities (parties, classes, events)
- Other (please specify)

## DEMOGRAPHIC RESULTS

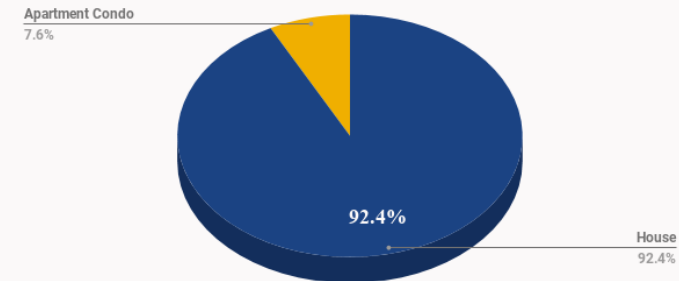
UNDER 18 YOUTH IN HOUSEHOLD



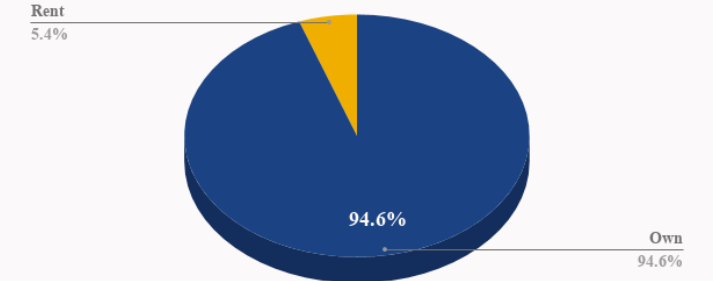
SENIORS (65+) IN HOUSEHOLD



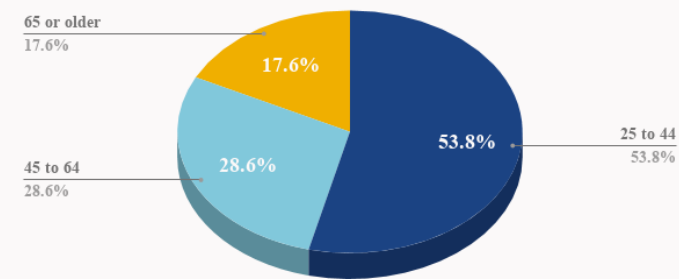
DWELLING TYPE



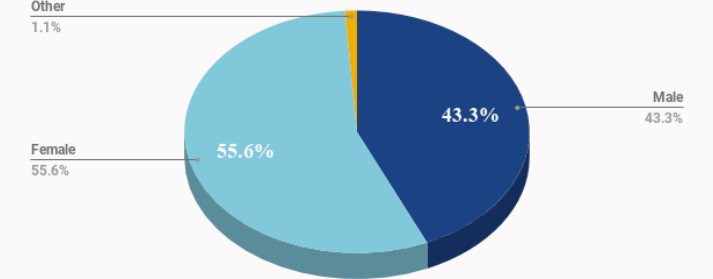
RENT VS. OWN



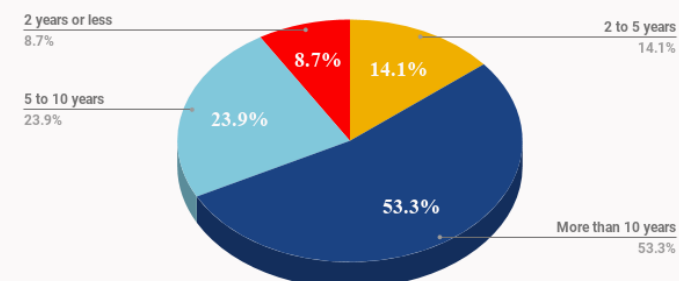
AGE OF SURVEY RESPONDENTS



GENDER IDENTIFICATION



NEIGHBOURHOOD TENURE

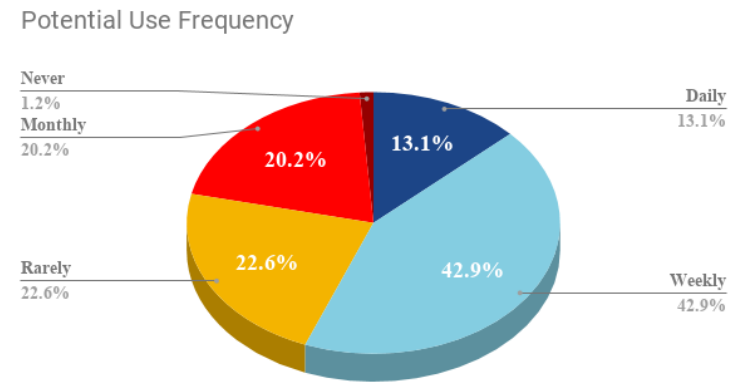




# March Survey Results

## Overall Support For Park Concept Options & Initiatives

On the whole, there was a good level of support for either of the concept options displayed. Concept Option #1 was clearly favoured by a large majority of open house attendees and survey respondents. While concept option #2 was still reasonably well supported, far fewer people in the neighbourhood recorded themselves as 'very supportive', and a significantly higher number of people recorded themselves as 'opposed' or 'very opposed' to concept option #2.



### Concept Option 1

CONCEPT #1 - COMMENTS OF SUPPORT
The vehicles access location along 113 Avenue is better than 116 Street as it avoids traffic issues on a busier road
The option as shown requires the removal of some existing trees
A bigger skating rink is supported as compared to concept #2
The concentration of elements in a more centralized orientation is preferred as it leads to better visibility and joint use of park elements
The proximity of elements such as a future building and the playground is better so that adults can see and monitor children

CONCEPT #1 - COMMENTS IN OPPOSITION
The vehicles access location along 116th Street may cause traffic issues
The option as shown requires the removal of some existing trees
A larger skating rink is desired and could include moving the boards from the existing rink at the Lions Centre
Hall is less visible and perhaps more subject to vandalism
Too tight. Everything is too close together and more spaced out in Concept 2
The fire pit is too close to the playground

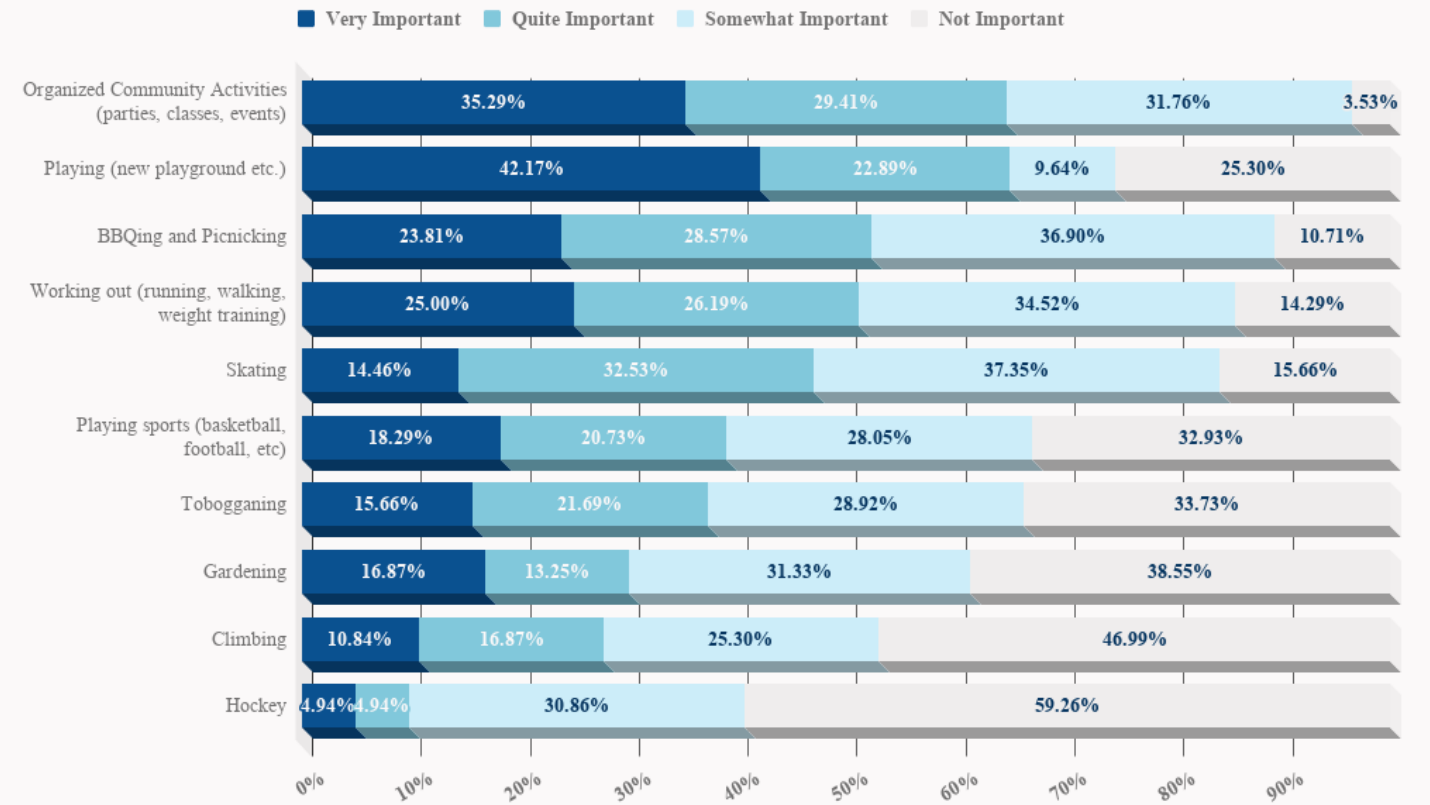
### Concept Option 2

CONCEPT #2 - COMMENTS OF SUPPORT
I would prefer the access off Tower Road, to avoid bringing excess or additional traffic onto 113 Avenue
Like having the multi-sport surface further away from the parking lot
Like there are less mature trees removed in this concept as compared with Concept 1
Appreciate the separation of the picnic shelter and hall building
The meeting / seating place around the firepit is better in this concept

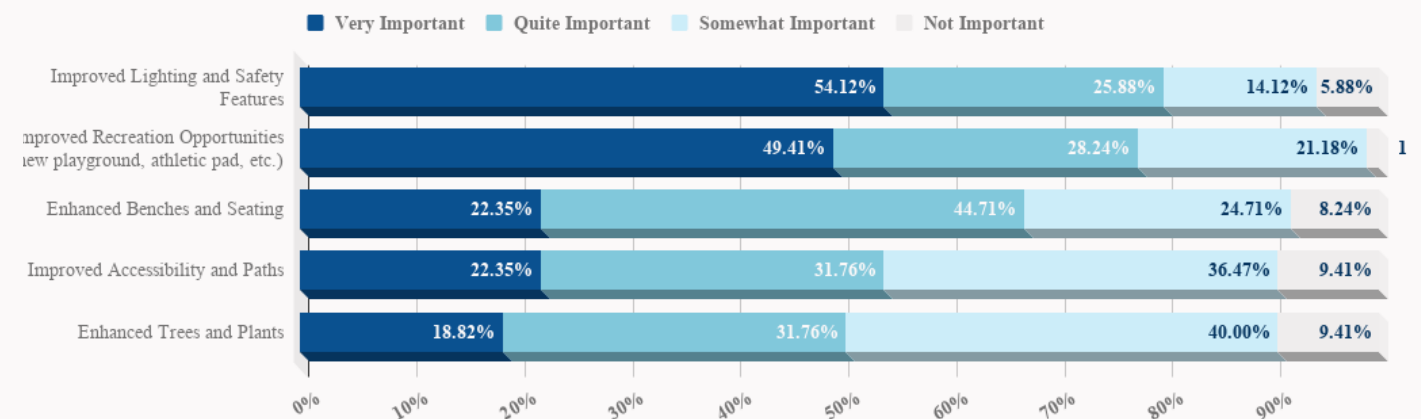
CONCEPT #2 - COMMENTS IN OPPOSITION
Do not like the odd shaped triangular skating rink, and it's too small when compared with Concept 1
Do not like the parking / access along Tower Road as it's busier and will slow down traffic and create more conflict with pedestrians near the existing crosswalk there
The seating area is too far from the playground
the multi-sport surface area is too close to the stormwater management facility, and kids may lose their balls
Do not like the sheltered picnic area right next to the parking lot
The concept is too spread out, too much distance between sheltered area and playground

## OVERALL CONCEPT DESIGN PRIORITIES

### ACTIVITIES PRIORITIZATION



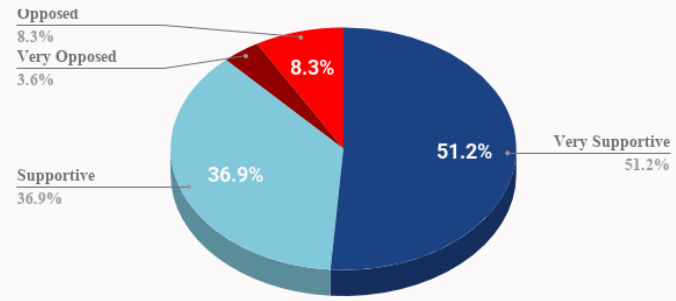
### DESIRED PARK FEATURES



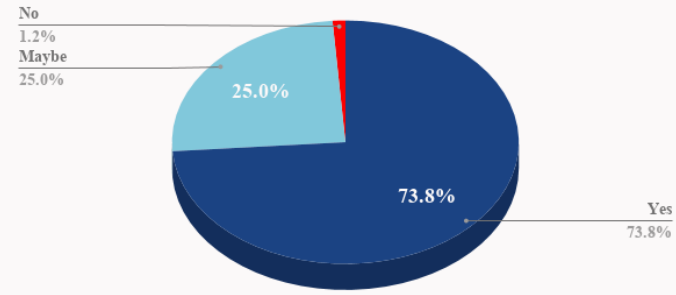


# Concept Options Support

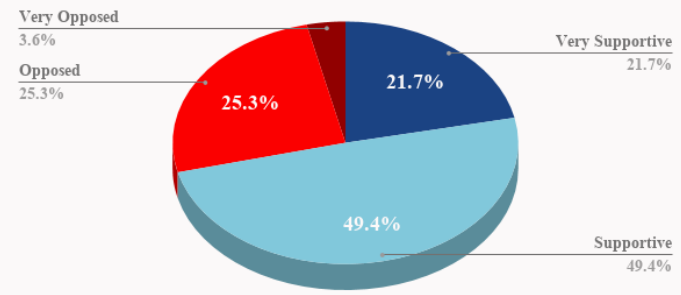
CONCEPT 1: LEVEL OF SUPPORT



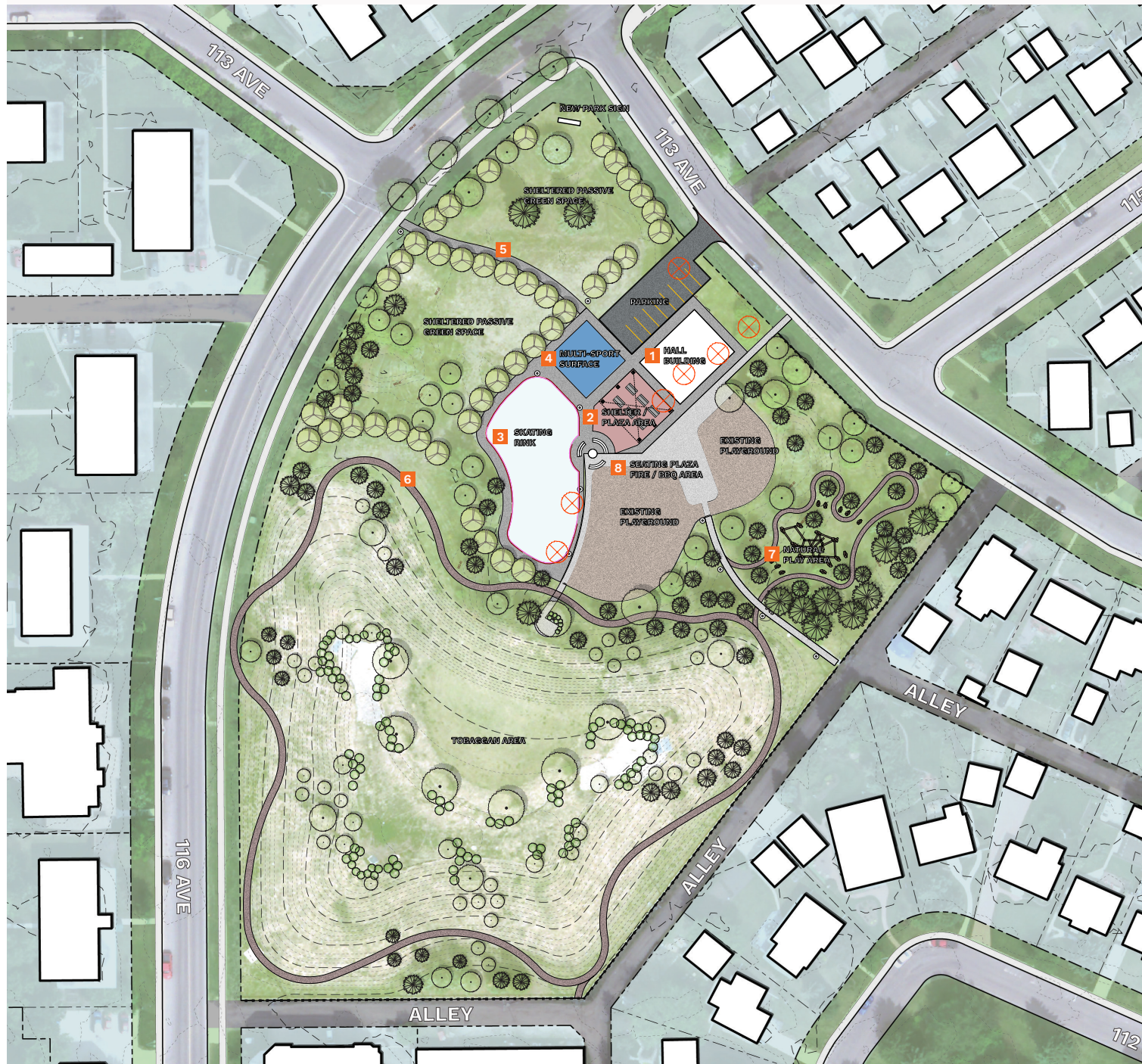
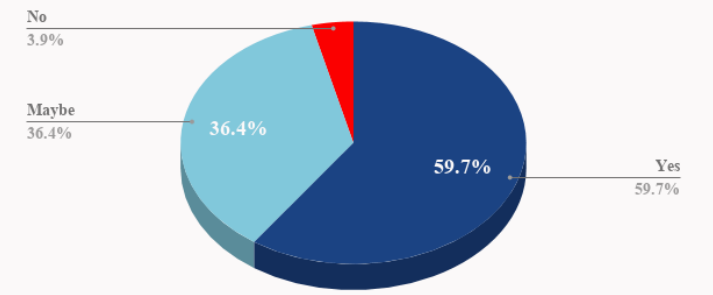
CONCEPT 1: DO YOU SEE YOURSELF USING THIS SPACE?



CONCEPT 2: LEVEL OF SUPPORT



CONCEPT 2: DO YOU SEE YOURSELF USING THIS SPACE?





# Findings Summary & Recommendations

## CONCEPT PREFERENCE

Data showed a clear preference among those surveyed for concept option number 1. The most often cited reasons included:

- A more compact centralized organization of elements that preserves more green space within the park, and allows more complimentary use to happen (ie. parents sitting at the hall or picnic site will have a better visual connection with their children at the playground)
- A desire for a larger skating rink as compared to what is shown on concept 2
- Survey respondents and open house attendees were equally divided on the parking lot and vehicle access location. There was an equal amount of positive support for concept 1 due to the parking lot and vehicle access location. Among those surveyed, roughly half preferred Concept #2 vehicle access sited on 116 Street, with the other half in favour of the access on 113 Avenue. In both cases, increased traffic and congestion on either the street or avenue were cited as the primary concern.

The most frequent negatively cited items with respect to concept 1 include:

- The concept envisions requiring the removal of some of the trees in the park. A suggestion was made to shift the hall building and picnic area further west / north to avoid tree removals

## ACTIVITIES & INITIATIVES PRIORITIZATION

Survey responses were tallied and ranked activities in the following order of preference:

- Organized Community Activities (parties, classes, events)
- Playing (new playground etc.)
- BBQing and Picnicking
- Working out (running, walking, weight training)
- Skating
- Playing sports (basketball, football, etc)

During the March open house event the proposed multi-sport surface was discussed with residents, and the most often heard desires for sports activities were basketball and tennis.

## DESIRED PARKS IMPROVEMENTS

Survey responses were tallied and ranked park improvements in the following order of preference:

- Improved Lighting and Safety Features
- Improved Recreation Opportunities (new playground, athletic pad, etc.)
- Enhanced Benches and Seating
- Improved Accessibility and Paths
- Enhanced Trees and Plants

Findings showed that improving lighting and safety features, and increasing recreation and fitness opportunities were very highly ranked by the community. Proposed concepts both propose new lighting along the new main east / west path traversing the site. Proposed concepts also increase recreation and play opportunities, and further refinements are recommended on the concept plan that reflect the priorities of the community.

## Recommendations

- Findings showed a clear consensus among the community for Concept Option #1. It is recommended to advance the project with Concept 1 with further refinements
- That the proposed parking lot alignment and building siting of concept #1 are retained, despite tree removal impacts. The parking access as proposed aligns with the alley to minimize traffic impacts, and also minimizes visual impacts for adjacent residents fronting onto the park site along 113a Avenue.
- That further refinements are made to the concept plan that better reflect the prioritization of the neighbourhood for increased fitness activities





## APPENDIX



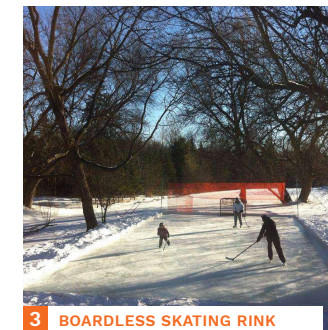
**PRINCE RUPERT COMMUNITY PARK CONCEPTS**  
**DRAFT CONCEPT OPTION 1 // 2018.01.11**



**1 NEW COMMUNITY BUILDING SITE**



**2 SHELTER STRUCTURE**



**3 BOARDLESS SKATING RINK**



**4 SYNTHETIC MULTI-SPORT SURFACE**

**LEGEND**

-  PROPOSED DECIDUOUS
-  EXISTING DECIDUOUS
-  EXISTING CONIFEROUS
-  EXISTING SHRUB
-  PROPOSED TREE REMOVAL



**5 PATH & PEDESTRIAN LIGHTING**



**6 GRAVEL / FINES PEDESTRIAN PATH**



**7 NATURALIZED PLAY AREA**



**8 SEATING PLAZA AND FIRE PIT / BBQ AREA**



**PRINCE RUPERT COMMUNITY PARK CONCEPTS**  
**DRAFT CONCEPT OPTION 2 // 2018.01.11**



1 NEW COMMUNITY BUILDING SITE



2 SHELTER STRUCTURE



3 BOARDLESS SKATING RINK



4 SYNTHETIC MULTI-SPORT SURFACE

**LEGEND**

- PROPOSED DECIDUOUS
- EXISTING DECIDUOUS
- EXISTING CONIFEROUS
- EXISTING SHRUB
- PROPOSED TREE REMOVAL



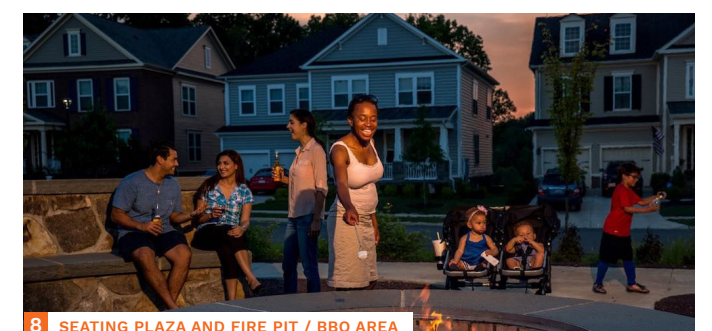
5 PATH & PEDESTRIAN LIGHTING



6 GRAVEL / FINES PEDESTRIAN PATH



7 NATURALIZED PLAY AREA



8 SEATING PLAZA AND FIRE PIT / BBQ AREA